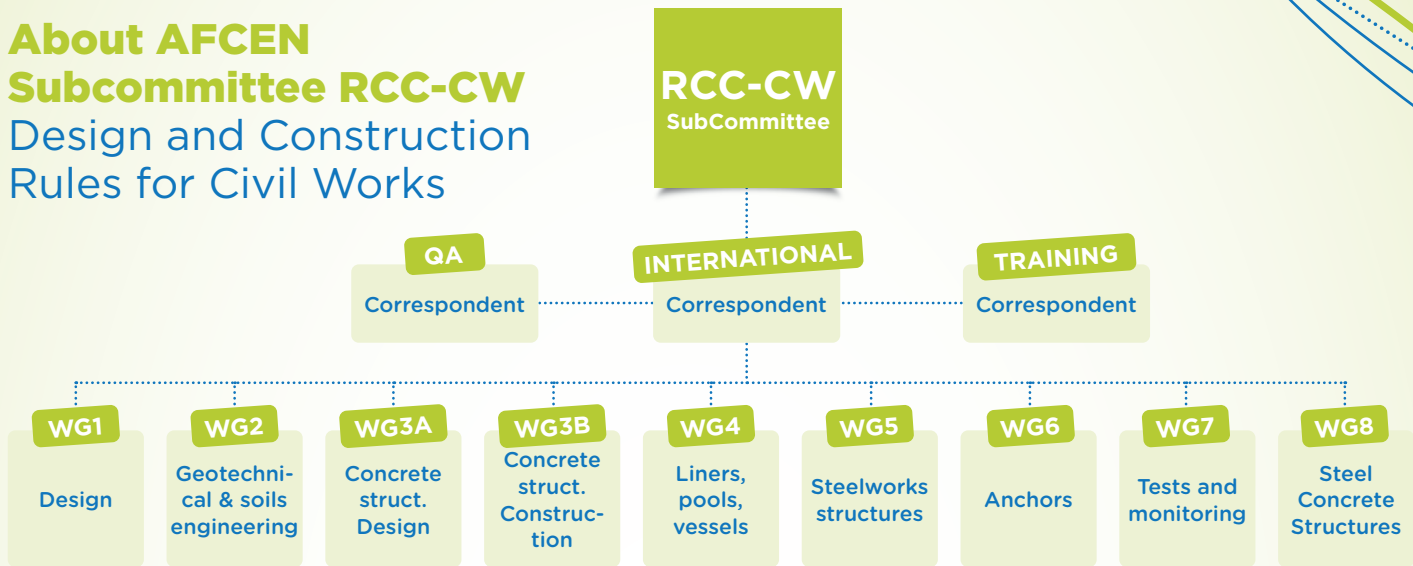


## About AFCEN Subcommittee RCC-CW Design and Construction Rules for Civil Works



### Subcommittee organization

ABOUT 160 EXPERTS ARE PARTICIPATING TO EITHER OF THE 8 WORKING GROUPS:

- **WG1** Design and structure of the Code
- **WG2** Geotechnics
- **WG3A** Concrete structures and prestressing (Design)
- **WG3B** Concrete structures and prestressing (Construction)
- **WG4** Containment, pool liners and storage tank
- **WG5** Steelwork structures
- **WG6** Anchorages
- **WG7** Tests and monitoring
- **WG8** Steel Concrete Structures

### Available Editions

RCC-CW CODE IS AVAILABLE AS:

- **ETC-C 2010** used for UK EPR Generic Design Assessment
- **ETC-C 2012** updated with the experience gained in French, Chinese and UK EPR
- **RCC-CW 2015, 2016, 2017, 2018, 2019, 2020, 2021 and 2023** updated editions for next new build projects



## RCC-CW CIVIL WORKS

### Future Developments Key issues

GENERAL OBJECTIVES ARE:

- To update the code to incorporate the industrial feedback and the evolutions of standards
- To develop online training courses
- To reinforce international cooperations through users groups

SPECIFIC DEVELOPMENTS INCLUDE:

- Composite steel and concrete structures
- Improved reinforcement ratio
- Ageing management
- Impact of eurocodes evolutions

## Last Edition Outline

### Part G: GENERAL

#### Part D: DESIGN

- Actions and combinations of actions
- Soil engineering and foundations
- Concrete structures (criteria from EC2 + complements)
- Metal parts contributing to leak-tightness (containment liner and penetrations, pool liners)
- Steelwork and plate anchorages
- Appendices: seismic analysis, shrinkage & creep, engineering methods for impact and perforation calculations, Tornado load case, Design Extension methods

#### Part C: CONSTRUCTION

- Materials: soil, concrete, formwork, rebars, prestressing, precast
- Penetrations, liners for containment & pools, steelworks
- Geomembrane, Coatings, Joints
- Containment construction, Tolerances

#### Part AM: AGEING MANAGEMENT

- General requirements
- Ageing management for containment
- Geotechnical structures
- Reinforced concrete structures
- Anchor systems

## Subcommittee Chair

**Guillaume ZAMMOUT (EDF)**  
CHAIRMAN

**Yolaine HERRERA (EDF)**  
TRAINING CORRESPONDENT

**Tim VINEY (JACOBS)**  
UK USERS GROUP LEADER

**Shaojun ZHU (CGN)**  
CHINESE USERS GROUP LEADER



Join RCC-CW Subcommittee and contribute to our work around the globe.

Thank you for visiting our website:

[www.afcen.com](http://www.afcen.com)



## Certified training courses with Partner:

Basis of ETC-C & RCC-CW requirements for specific design criteria of civil engineering structures of PWR nuclear power plant.

1 day for introduction • 3 days for Design • 2 days for Construction  
Training in English or French

Certificate of attendance issued

The trainers are specialists of the Code, approved by the AFCEN and are part of the Partners involved in the development of the Code.



**PONTS FORMATION CONSEIL**  
Vecteur de performance